

## Integrated Federal Resources for Ecosystem Protection

Southeast Natural Resource Leaders Group

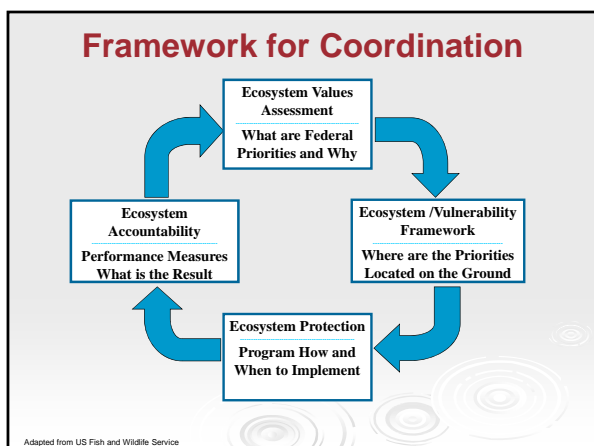
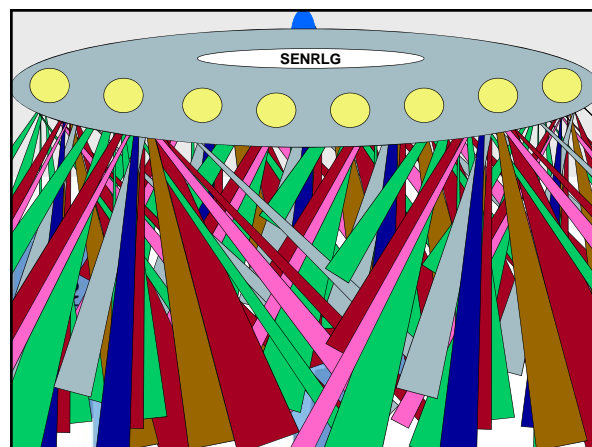
**Conservation and Restoration Pilot Project:  
Albemarle/Pamlico Estuary**

*Appalachian Landscape Conservation Cooperative  
November 17, 2011*



## Federal Program Resources for Conservation/Restoration

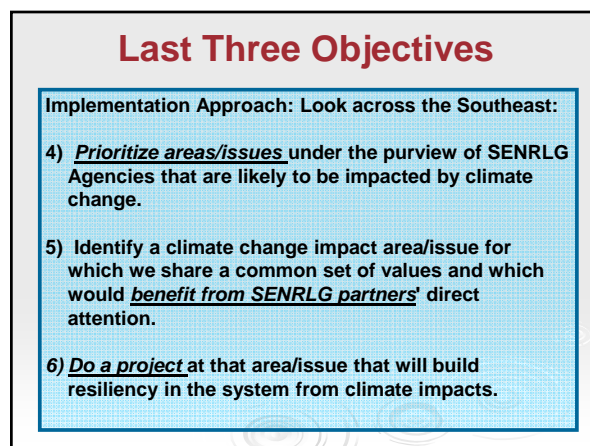
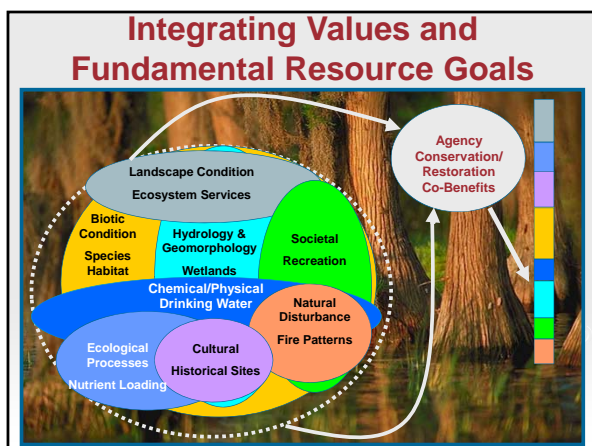
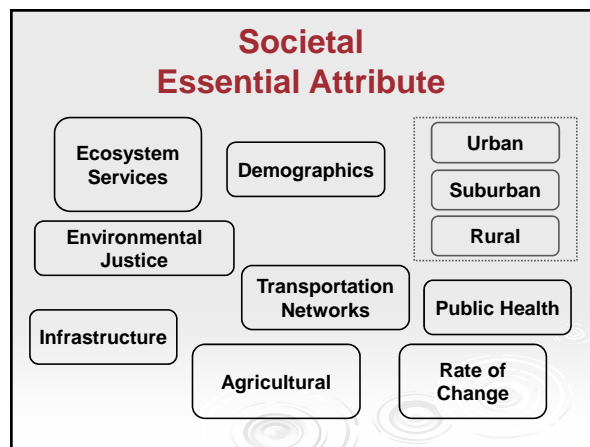
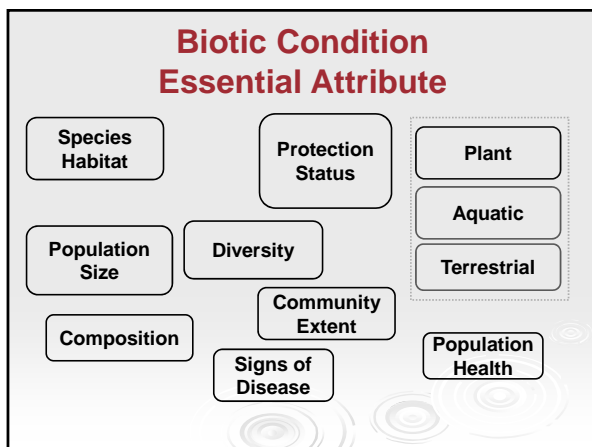
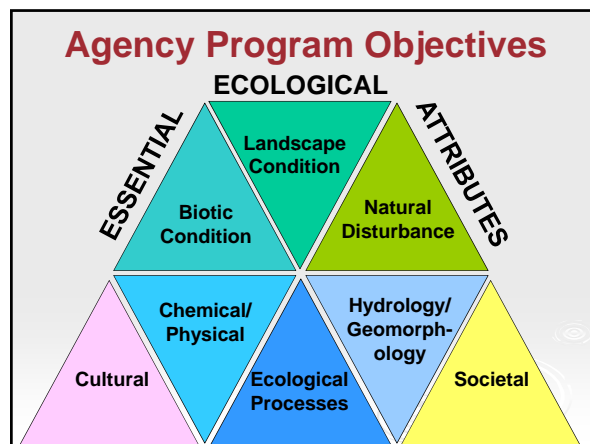
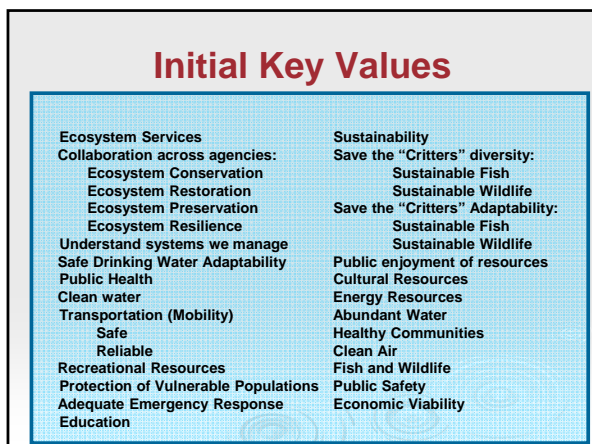
- Cooperative Forestry Programs (FS) 
- Landscape Conservation Cooperatives (DOI) 
- Coastal and Estuarine Land Conservation Program (NOAA) 
- Watershed and River Basin Assessments (ACE) 

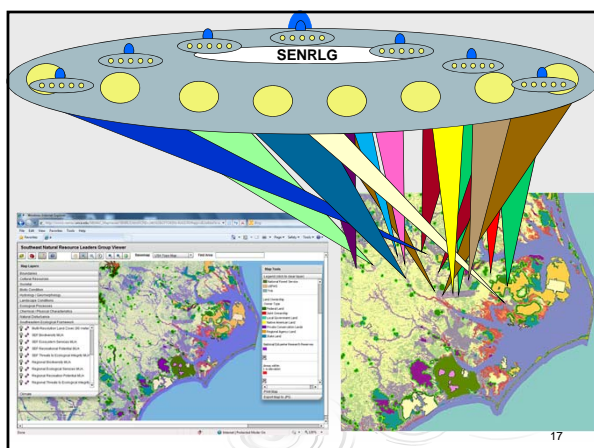
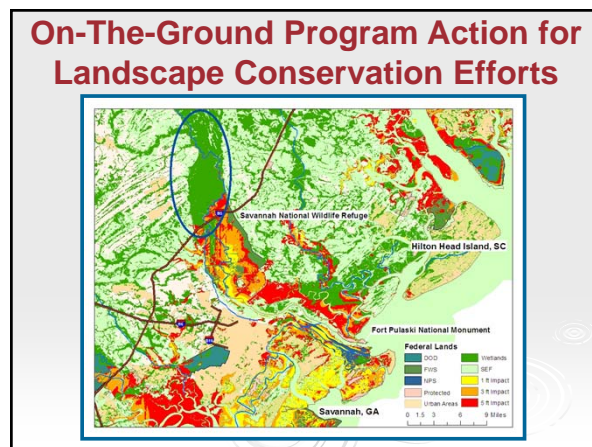
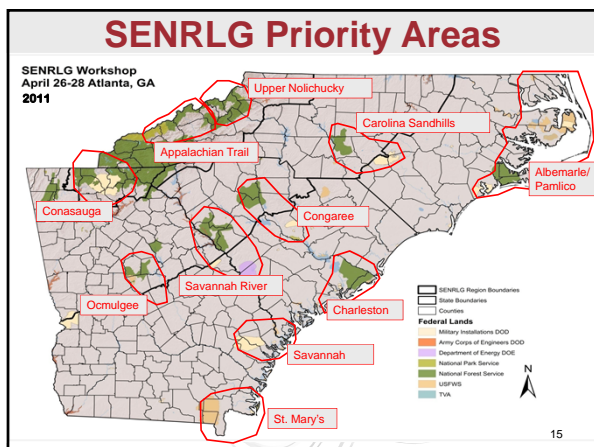
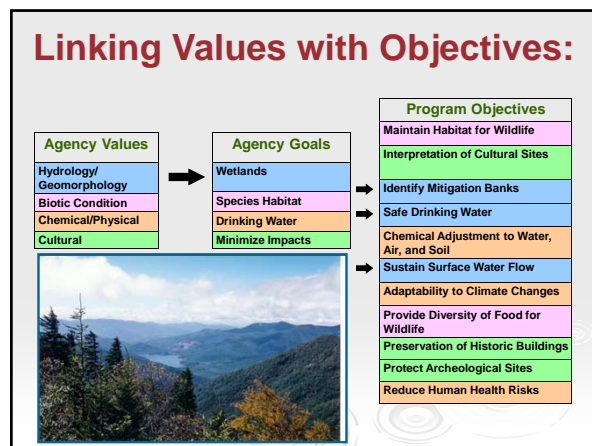
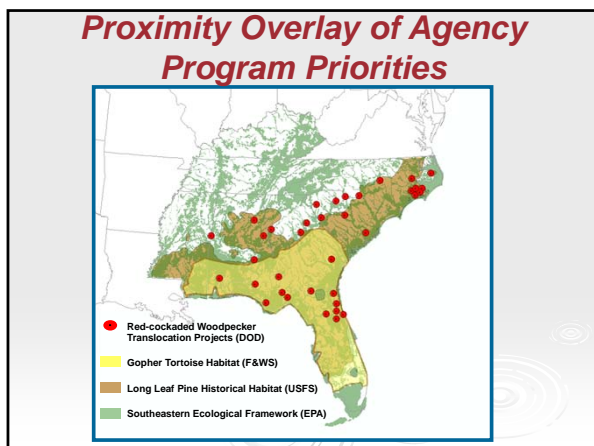


## First Three Objectives

**Assessment Approach: Look across the Southeast:**

- 1) Identify the common fundamental resources and values across SENRLG agencies related to the resources we oversee.
- 2) Identify fundamental resources and values under the purview of each SENRLG Agency that are likely to be impacted by climate change and variability.
- 3) Create a toolset of information collected under numbers 1 & 2 to facilitate the coordination of science and services among the SENRLG agencies.





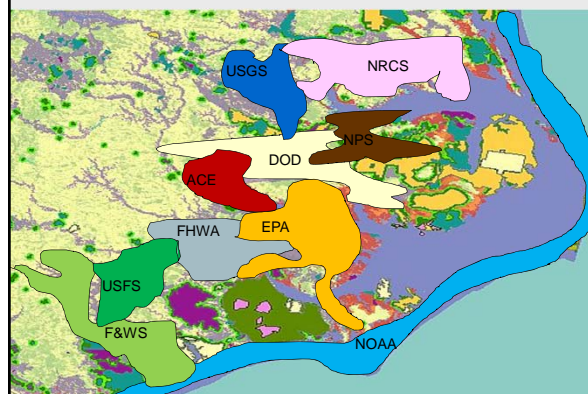
- ### Phase II Benefits to SENRLG
1. Performance measures and strategic implementation plan completed prior to start of FY 2013.
  2. Everglades' strategy took 8 years to develop, this process will be less than 2 years from start to finish.
  3. Federal leadership in support of administration priorities:
    - Executive Order 13514 on Federal Leadership in Environmental, Energy, and Economic Performance,
    - White House Task Force on Climate Adaptation - Guiding Principles, and
    - America's Great Outdoors - Effective Government.
  4. Existing data and information is available across the Southeast and can be used to address other natural resource stressors across the region.
  5. Performance measures can be used to support other partnerships across the region.



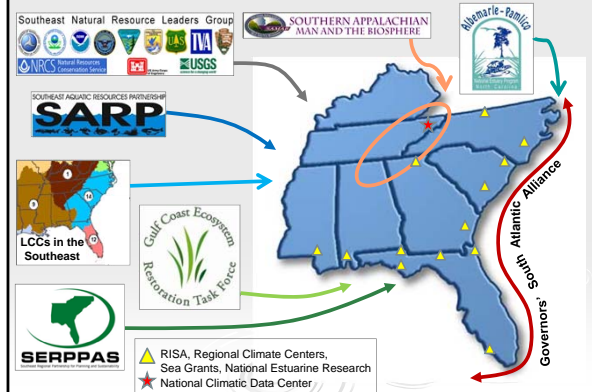
### What is the TRIP:

- **Productivity** – Where SENRLG agencies may collaborate and leverage resources that support resilience of the landscape to adapt to climate change risks within the estuary.
- **Effectiveness** – How SENRLG agencies can collaborate with external stakeholders to obtain co-benefits through targeted funding of restoration and conservation projects.
- **Accountability** – A set of possible performance metrics to evaluate SWENRLG agency program coordination accomplishments for on-the-ground work.

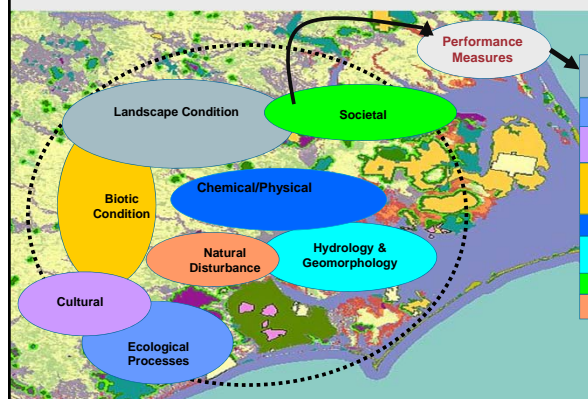
### Protecting the Landscape



### Federal Leadership



### Program Resources "The Money Map"



# SENRLG

*Integrating Natural Resource Protection & Providing Leadership across the Southeast*

Contact:  
Rick Durbrow, Project Lead  
US EPA Region 4  
404-562-8286